

GALVANIZED FITTINGS

+ B-STYLE HOSE SETS	1
+ A-STYLE HOSE SETS	3
+ DOUBLE HOSE CONNECTION	3
+ NPT THREADED	5
+ LOCKING SAFETY PINS	5
+ PUMP FLANGES	7
+ A-STYLE LOCKING BAR	9
+ A-STYLE PUMP FITTINGS	9
+ ELBOWS	11
+ INCREASERS	13
+ REDUCERS	13
+ T's	15
+ Y's	15
+ END PLUGS	17
+ END CAPS	17
+ DOUBLE MALES	17
+ DOUBLE FEMALES	17



WWW.WILLOC.COM • 1.800.801.0123
2150 106TH LANE NE, BLAINE, MN 55449



SIZE	PART NUMBER	WEIGHT	
GALVANIZED HOSE SET ASSEMBLY*			
2"	275 HSA2	02.60 lbs	
3"	275 HSA3	05.10 lbs	
4"	275 HSA4	11.55 lbs	
5"	275 HSA5	16.60 lbs	
6"	275 HSA6	21.85 lbs	
8"	275 HSA8	35.15 lbs	



SIZE	PART NUMBER	WEIGHT	
GALVANIZED BALL / MALE HOSE END*			
2"	260 HTM2	0.80 lbs	
3"	260 HTM3	1.45 lbs	
4"	260 HTM4	3.45 lbs	
5"	260 HTM5	4.75 lbs	
6"	260 HTM6	5.90 lbs	
8"	260 HTM8	10.45 lbs	



SIZE	PART NUMBER	WEIGHT	
GALVANIZED SOCKET / FEMALE HOSE END*			
2"	270 HTF2	0.80 lbs	
3"	270 HTF3	1.04 lbs	
4"	270 HTF4	3.60 lbs	
5"	270 HTF5	5.40 lbs	
6"	270 HTF6	6.65 lbs	
8"	270 HTF8	11.55 lbs	

*Only Wil-loc has the wedge shaped barb on the 4", 6" & 8" sizes.



SIZE	PART NUMBER	WEIGHT	
GALVANIZED LOCKING LEVER			
2"	273 LR2	1.00 lbs	
3"	273 LR3	2.25 lbs	
4"	273 LR4	4.40 lbs	
5"	273 LR5	6.45 lbs	
6"	273 LR6	9.35 lbs	
8"	273 LR8	13.15 lbs	



SIZE	PART NUMBER	WEIGHT	
O-RING			
2"	280 OR2	0.05 lbs	
3"	280 OR3	0.10 lbs	
4"	280 OR4	0.20 lbs	
5"	280 OR5	0.20 lbs	
6"	280 OR6	0.45 lbs	
8"	280 OR8	0.55 lbs	



SIZE	PART NUMBER	WEIGHT	
GALVANIZED DOUBLE HOSE CONNECTION			
2"	278 DHC2	1.00 lbs	
3"	278 DHC3	1.15 lbs	
4"	278 DHC4	3.95 lbs	
6"	278 DHC6	6.80 lbs	
8"	278 DHC8	14.70 lbs	

PRICE AND DISCOUNT STRUCTURES SUBJECT TO CHANGE WITHOUT NOTICE.

© 2008 WIL-LOC

WIL - 110508

VACUUM RATING

30 inches hg

PRESSURE RATING

2 & 3 inch = 290 psi
4 - 8 inch = 175 psi

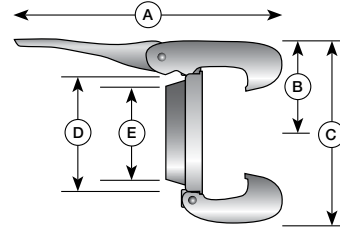
NUMBER OF RIBS

2 & 3 inch = 2
4 - 8 inch = 3

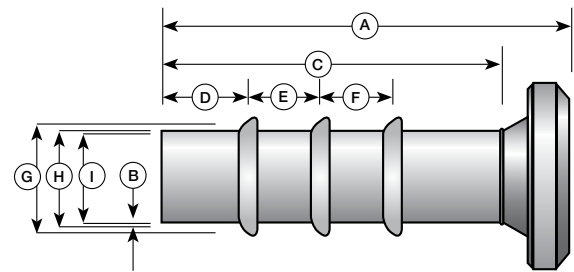
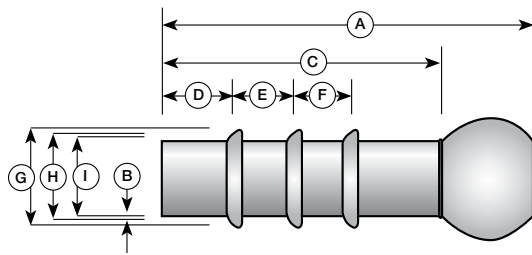
LEVER MECHANICAL SPECS

Specifications to 1/100th of an Inch // Specs Subject to Change

SIZE	A	B	C	D	E
2" 50mm x 50mm	7.09	3.35	4.92	3.94	2.44
3" 76mm x 76mm	9.25	3.54	7.09	5.31	3.43
4" 108mm x 100mm	10.83	6.69	9.25	7.48	5.20
5" 133mm x 125mm	11.41	5.51	10.83	8.07	5.91
6" 159mm x 150mm	13.39	6.30	11.81	9.06	6.69
8" 194mm x 200mm	13.19	9.06	13.98	10.04	8.66



PRICE AND DISCOUNT STRUCTURES SUBJECT TO CHANGE WITHOUT NOTICE.



Only Wil-Loc has the wedge shaped hose barb on the 4", 6" & 8" sizes.

MALE MECHANICAL SPECS

Hose Set Specifications to 1/100th of an Inch // Specifications Subject to Change

SIZE	A	B	C	D	E	F	G	H	I
2" 50mm x 50mm	6.50	0.06	4.33	0.98	1.38		2.09	1.97	1.85
3" 76mm x 76mm	8.07	0.06	5.31	1.38	1.38		3.11	2.99	2.87
4" 108mm x 100mm	11.42	0.07	7.28	1.38	1.77	1.77	4.09	3.94	3.80
5" 133mm x 125mm	11.61	0.07	7.87	1.38	1.77	1.77	5.08	4.92	4.78
6" 159mm x 150mm	12.40	0.07	8.46	1.57	1.97	1.97	6.06	5.91	5.77
8" 194mm x 200mm	14.96	0.08	9.84	1.97	2.36	2.36	8.11	7.87	7.71

FEMALE MECHANICAL SPECS

Hose Set Specifications to 1/100th of an Inch // Specifications Subject to Change

SIZE	A	C	D	E	F	G	H	I	S
2" 50mm x 50mm	5.51	4.33	0.98	1.38		2.09	1.97	1.85	0.06
3" 76mm x 76mm	6.69	5.31	1.38	1.38		3.11	2.99	2.87	0.06
4" 108mm x 100mm	9.45	7.28	1.38	1.77	1.77	4.09	3.94	3.80	0.07
5" 133mm x 125mm	10.04	7.87	1.38	1.77	1.77	5.08	4.92	4.78	0.07
6" 159mm x 150mm	10.43	8.46	1.57	1.97	1.97	6.06	5.91	5.77	0.07
8" 194mm x 200mm	12.99	9.84	1.97	2.36	2.36	8.11	7.87	7.71	0.08

TECH TIP

Wil-Loc couplings have a higher working pressure rating than typical cam-lock or other quick action couplings.

Typical cam-lock: 2" = 250psi, 3" = 125psi, 4" = 100psi, 5" = 75psi and 6" = 75psi. Check with your manufacturer for specific ratings.



10" HOSE SET SHOWN

GALVANIZED HOSE SET ASSEMBLY

SIZE	PART NUMBER	WEIGHT
10"	276 HSA10	54.60 lbs
12"	276 HSA12	88.80 lbs

12" Galvanized Locking Bar sold separately.



GALVANIZED BALL / MALE HOSE TAIL W/ LOCKING RING

SIZE	PART NUMBER	WEIGHT
10"	261 HTM10	20.75 lbs
12"	261 HTM12	30.40 lbs

All 10" and 12" A-Style Hose Sets come with a locking ring.



10" FEMALE SHOWN

GALVANIZED SOCKET / FEMALE HOSE TAIL W/ O-RING

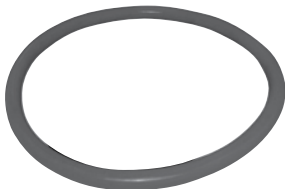
SIZE	PART NUMBER	WEIGHT
10"	271 HTF10	25.55 lbs
12"	271 HTF12	44.50 lbs

12" Galvanized Locking Bar sold separately.



GALVANIZED LOCKING RING

SIZE	PART NUMBER	WEIGHT
10"	251 G10R	8.35 lbs
12"	251 G12R	13.90 lbs



O-RING

SIZE	PART NUMBER	WEIGHT
10"	281 OR10	1.05 lbs
12"	281 OR12	1.55 lbs



GALVANIZED DOUBLE HOSE CONNECTION

SIZE	PART NUMBER	WEIGHT
10"	278 DHC10	
12"	278 DHC12	22.45 lbs

PRICE AND DISCOUNT STRUCTURES SUBJECT TO CHANGE WITHOUT NOTICE.

© 2008 WIL-LOC
WIL - 110508

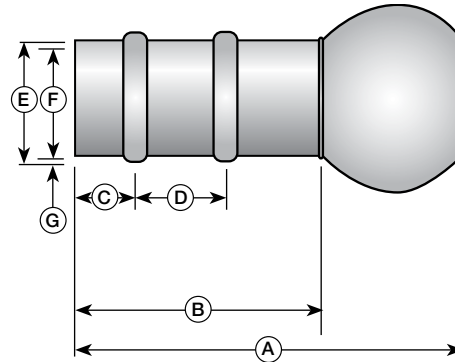
VACUUM RATING
30 inches hg

PRESSURE RATING
88 psi

NUMBER OF RIBS
2



A-STYLE LOCKING RING



MALE MECHANICAL SPECS

Hose Set Specifications to 1/100th of an Inch // Specifications Subject to Change

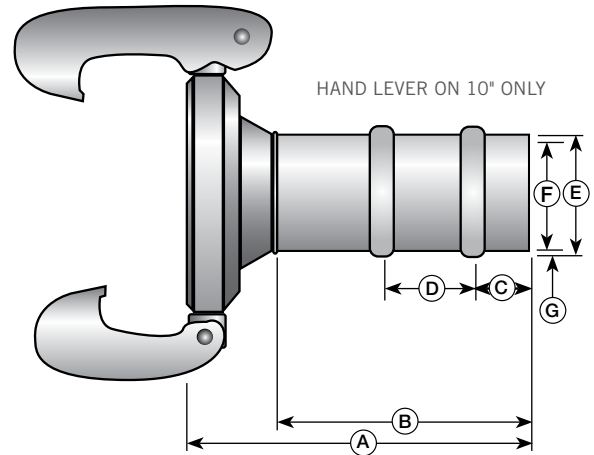
SIZE	A	B	C	D	E	F	G
10" 250mm x 150mm	18.54	11.81	3.54	4.72	10.08	9.84	0.98
12" 300mm x 300mm	18.54	11.81	3.54	4.72	12.05	11.81	0.98



12" FEMALE HOSE TAIL



10" FEMALE HOSE TAIL



HAND LEVER ON 10" ONLY

FEMALE MECHANICAL SPECS

Hose Set Specifications to 1/100th of an Inch // Specifications Subject to Change

SIZE	A	B	C	D	E	F	G
10" 250mm x 150mm	16.14	11.81	3.54	4.72	10.08	9.84	0.98
12" 300mm x 300mm	16.89	11.81	3.54	4.72	12.05	11.81	0.98

TECH TIP

For easier coupling (especially of larger sizes) lubricate O-rings with Wil-lube (as seen in Specialty section). This will allow the ball to seat into the socket easier during first time usage.

Double hose connections provide a quick, inexpensive way to repair leaks in the field. Cut the leak area out of the lay-flat hose, insert the double hose connection and use two Wil-loc T-Bolt clamps per end to clamp the lay-flat onto double connection.

PRICE AND DISCOUNT STRUCTURES SUBJECT TO CHANGE WITHOUT NOTICE.

WIL - 110508

© 2008 WIL-LOC


GALVANIZED MALE THREADED LONG BALL / MALE W/ LOCKING LEVER

SIZE	PART NUMBER	WEIGHT
2"	020 BMT2	3.00 lbs
3"	020 BMT3	6.70 lbs
4"	020 BMT4	10.40 lbs
6"	020 BMT6	22.45 lbs
8"	020 BMT8	37.55 lbs


GALVANIZED MALE THREADED SHORT BALL / MALE W/ LOCKING LEVER

SIZE	PART NUMBER	WEIGHT
2"	022 BMT2	2.00 lbs
3"	022 BMT3	4.05 lbs
4"	022 BMT4	7.70 lbs
6"	022 BMT6	15.90 lbs
8"	022 BMT8	25.15 lbs


GALVANIZED FEMALE THREADED SHORT BALL / MALE W/ LOCKING LEVER

SIZE	PART NUMBER	WEIGHT
2"	025 BFTA2	3.00 lbs
3"	025 BFTA3	6.02 lbs
4"	025 BFTA4	12.25 lbs
6"	025 BFTA6	26.20 lbs
8"	025 BFTA8	50.60 lbs


GALVANIZED MALE THREADED SOCKET / FEMALE

SIZE	PART NUMBER	WEIGHT
2"	040 SMT2	1.10 lbs
3"	040 SMT3	1.75 lbs
4"	040 SMT4	3.50 lbs
6"	040 SMT6	6.80 lbs
8"	040 SMT8	14.05 lbs


GALVANIZED FEMALE THREADED SOCKET / FEMALE

SIZE	PART NUMBER	WEIGHT
2"	045 SFTA2	2.05 lbs
3"	045 SFTA3	5.10 lbs
4"	045 SFTA4	8.05 lbs
6"	045 SFTA6	17.10 lbs
8"	045 SFTA8	39.50 lbs


LEVER LOCKING SAFETY PINS

SIZE	PART NUMBER	WEIGHT
2"	009 LLSP2	N/A
3" - 4"	009 LLSP3-4	N/A
6" - 8"	009 LLSP6-8	N/A

PRICE AND DISCOUNT STRUCTURES SUBJECT TO CHANGE WITHOUT NOTICE.

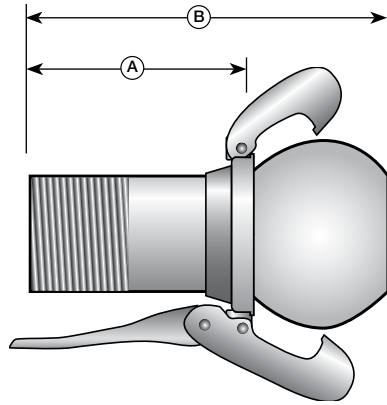
WIL - 110508 © 2008 WIL-LOC

VACUUM RATING
30 inches hg

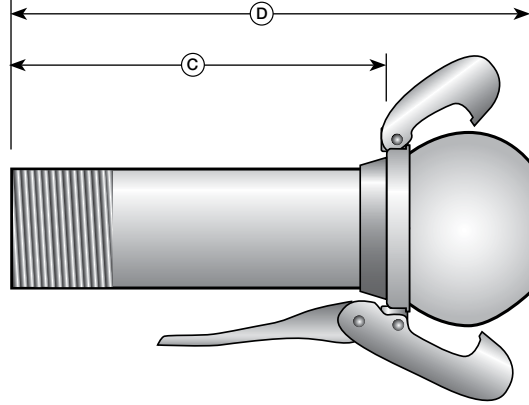
PRESSURE RATING
2 - 3" = 290 psi
4 - 8" = 175 psi

THREADED PATTERN
NPT

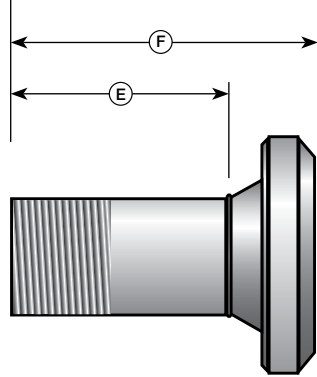
022 SERIES



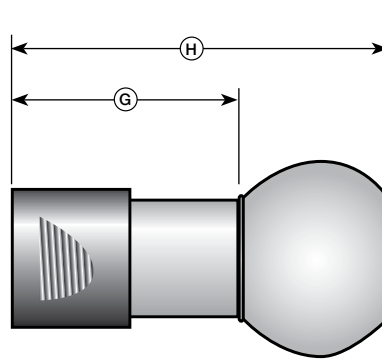
020 SERIES



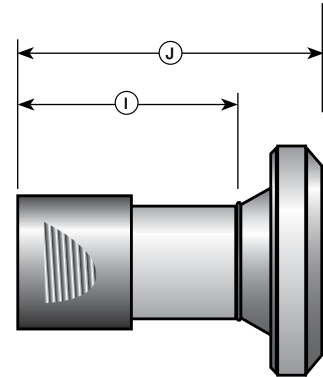
040 SERIES



025 SERIES



045 SERIES



PRICE AND DISCOUNT STRUCTURES SUBJECT TO CHANGE WITHOUT NOTICE.

NPT MECHANICAL SPECS

Specifications to 1/8th of an Inch // Specifications subject to change

SIZE	A	B	C	D	E	F	G	H	I	J
2" 50mm x 50mm	2.76	4.92	5.51	7.67	2.76	3.98	4.35	6.50	4.35	5.50
3" 76mm x 76mm	2.76	5.59	6.69	9.53	2.76	4.13	4.62	7.50	4.62	6.00
4" 108mm x 100mm	2.76	7.00	6.69	10.94	2.76	4.92	5.42	9.63	5.42	7.50
6" 159mm x 150mm	3.94	8.03	9.45	13.54	3.94	5.91	6.89	11.00	6.89	8.87
8" 194mm x 200mm	3.94	9.17	9.06	14.29	3.94	7.17	8.22	13.50	8.22	11.50

TECH TIP

Wil-loc offers two different threaded shanks for the male connections. The 020 Series allows the locking ring lever to close above the male NPT threads. The 022 Series locking lever closes below the male NPT threads. Check application clearance before choosing the correct fit.

Before installing a Wil-loc threaded fitting, apply an all-purpose anti-seize product to threads. If the fitting should have to be removed from the pump, the anti-seize product can prevent seizure of the threads.

**GALVANIZED DISCHARGE FLANGE BALL / MALE**

SIZE	PART NUMBER	WEIGHT
3"	010 F3M	11.60 lbs
4"	010 F4M	17.15 lbs
6"	010 F6M	27.90 lbs
8"	010 F8M	39.85 lbs

All flanges are designed to ASA 150 series hole specifications.

**GALVANIZED SUCTION FLANGE SOCKET / FEMALE**

SIZE	PART NUMBER	WEIGHT
3"	030 F3F	8.90 lbs
4"	030 F4F	12.05 lbs
6"	030 F6F	16.00 lbs
8"	030 F8F	24.30 lbs

All flanges are designed to ASA 150 series hole specifications.

**GALVANIZED REDUCING FLANGE - MALE / FEMALE**

SIZE	PART NUMBER	WEIGHT
6"	033 F6-4M	23.25 lbs
8"	033 F8-6M	43.75 lbs
6"	032 F6-4F	14.00 lbs
8"	032 F8-6F	22.00 lbs

All flanges are designed to ASA 150 series hole specifications.

**GALVANIZED INCREASING FLANGE - MALE / FEMALE**

SIZE	PART NUMBER	WEIGHT
4"	033 F4-6M	16.00 lbs
6"	033 F6-8M	51.75 lbs
4"	032 F4-6F	26.75 lbs
6"	032 F6-8F	21.00 lbs

All flanges are designed to ASA 150 series hole specifications.

**FLANGE NEOPRENE GASKET**

SIZE	PART NUMBER	WEIGHT
3"	288 FGN3	0.20 lbs
4"	288 FGN4	0.30 lbs
6"	288 FGN6	0.35 lbs
8"	288 FGN8	0.35 lbs
10"	289 FGN10	0.50 lbs
12"	289 FGN12	0.65 lbs

1/8th inch thickness. 1/4th inch thickness available / full faced.

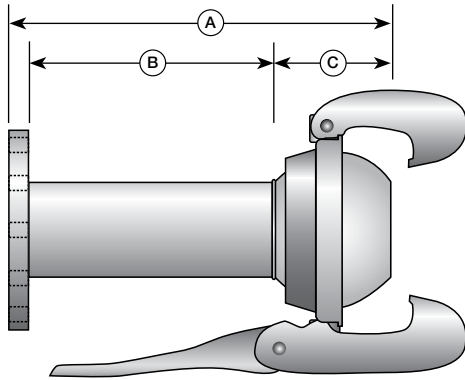
PRICE AND DISCOUNT STRUCTURES SUBJECT TO CHANGE WITHOUT NOTICE.

VACUUM
30 inches hg

PRESSURE RATING
3" = 290 psi
4 - 8" = 175 psi

NUMBER OF HOLES
3" has 4 bolt holes
4 - 8" has 8 bolt holes

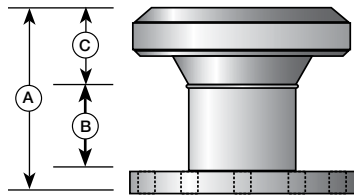
FLANGE PATTERN
ASA 150



MALE FLANGE SPECS

Specs to 1/8" & subject to change

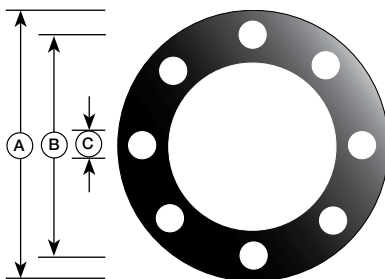
SIZE	A	B	C
3"	10.00	6.50	2.88
4"	11.88	7.00	3.50
6"	13.63	9.00	4.00
8"	15.63	9.88	5.25



FEMALE FLANGE SPECS

Specs to 1/8" & subject to change

SIZE	A	B	C
3"	4.63	2.75	1.38
4"	6.50	4.00	2.25
6"	6.50	4.00	2.25
8"	7.75	4.00	3.25



ASA FLANGE SPECS

Specs to 1/8" & subject to change

SIZE	A	B	C
3"	7.50	6.00	0.75
4"	9.00	7.50	0.75
6"	11.00	9.50	0.875
8"	13.50	11.95	0.875

TECH TIP

Wil-loc flange fittings are manufactured to ASA 150 pattern specifications. Gaskets should be used when mounting the flange fittings to a pump. If your pumps require other flange types or sizes, please contact your Wil-loc representative or dealer.

Wil-loc increasing flanges allow quick connection of high flow pumps to larger discharge lines. Higher flows can be achieved because larger diameter pipe decreases friction losses.

PRICE AND DISCOUNT STRUCTURES SUBJECT TO CHANGE WITHOUT NOTICE.



GALVANIZED DISCHARGE FLANGE BALL / MALE

SIZE	PART NUMBER	WEIGHT
10"	011 F10M	41.60 lbs
12"	011 F12M	64.35 lbs

All flanges are designed to ASA hole specifications.



GALVANIZED SUCTION FLANGE SOCKET / FEMALE

SIZE	PART NUMBER	WEIGHT
10"	031 F10F	39.20 lbs
12"	031 F12F	78.80 lbs

All flanges are designed to ASA hole specifications.
12" Galvanized Locking Bar sold separately.



B-STYLE COUPLING SHOWN

INCREASING & REDUCING FLANGE BALL / MALE

SIZE	PART NUMBER	WEIGHT
10"	034 F10-12M	90.00 lbs
12"	034 F12-10M	54.75 lbs

All flanges are designed to ASA hole specifications.

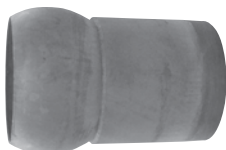


B-STYLE COUPLING SHOWN

INCREASING & REDUCING FLANGE SOCKETS / FEMALE

SIZE	PART NUMBER	WEIGHT
10"	035 F10-12F	93.00 lbs
12"	035 F12-10F	53.50 lbs

All flanges are designed to ASA hole specifications.



GALVANIZED MALE THREADED DISCHARGE BALL / MALE

SIZE	PART NUMBER	WEIGHT
10"	021 BMT10	35.50 lbs
12"	021 BMT12	63.80 lbs

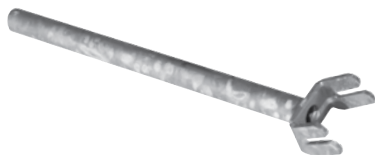
Threads are cut to NPT specifications.
Price includes locking ring.



GALVANIZED MALE THREADED SUCTION SOCKET / FEMALE

SIZE	PART NUMBER	WEIGHT
10"	041 SMT10	30.00 lbs
12"	041 SMT12	N/A

12" Galvanized Locking Bar sold separately.



A-STYLE GALVANIZED LOCKING BAR

SIZE	PART NUMBER	WEIGHT
12"	258 4H	2 lbs

PRICE AND DISCOUNT STRUCTURES SUBJECT TO CHANGE WITHOUT NOTICE.

© 2008 WIL-LOC
WIL - 110508

VACUUM
30 inches hg

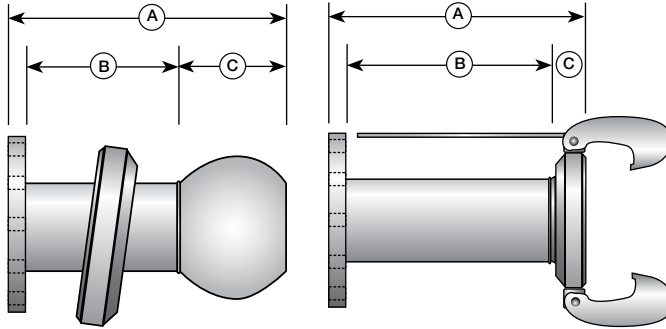
PRESSURE RATING
88 psi

FLANGE PATTERN
ASA 150

NUMBER OF HOLES
12 bolt holes

THREAD PATTERN
NPT

HAND LEVER ON 10" ONLY



A-STYLE FLANGE BALL SPECS

Specs to 1/8" & subject to change

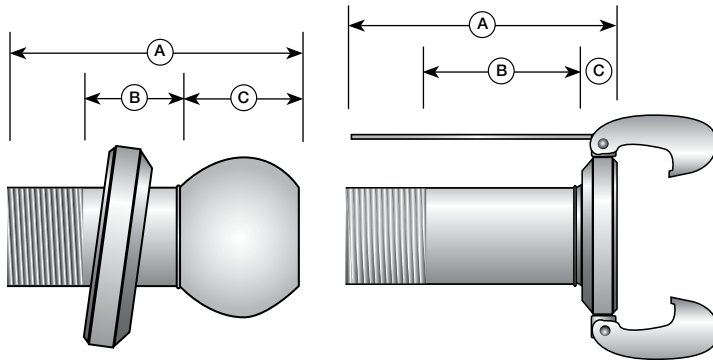
SIZE	A	B	C
10"	12.75	6.00	6.00
12"	13.75	5.00	8.00

A-STYLE FLANGE SOCKET SPECS

Specs to 1/8" & subject to change

SIZE	A	B	C
10"	11.75	7.00	4.00
12"	21.75	16.00	5.00

PRICE AND DISCOUNT STRUCTURES SUBJECT TO CHANGE WITHOUT NOTICE.



A-STYLE NPT THRD BALL SPECS

Specs to 1/8" & subject to change

SIZE	A	B	C
10"	17.75	8.50	6.75
12"	19.75	8.50	8.75

A-STYLE NPT THRD SOCKET SPECS

Specs to 1/8" & subject to change

SIZE	A	B	C
10"	15.75	9.25	4.00
12"	17.00	9.25	5.25

TECH TIP

The quick action and flexibility of 10" and 12" Wil-loc Couplings provides the end user with significant advantages over Victaulic or flanged methods previously used on large line applications.

Wil-loc full-face neoprene gaskets provide superior sealing and longevity compared to half-face flange gaskets.

For easier coupling (especially of larger sizes) lubricate O-rings with Wil-lube (as seen in Specialty section).

This will allow the ball to seat into the socket easier during first time usage.



GALVANIZED 90° ELBOW

SIZE	PART NUMBER	WEIGHT
2"	070 E2-90	2.65 lbs
3"	070 E3-90	5.20 lbs
4"	070 E4-90	10.85 lbs
6"	070 E6-90	22.15 lbs
8"	070 E8-90	32.45 lbs



GALVANIZED 60° ELBOW

SIZE	PART NUMBER	WEIGHT
2"	075 E2-60	2.30 lbs
3"	075 E3-60	4.65 lbs
4"	075 E4-60	10.05 lbs
6"	075 E6-60	20.00 lbs
8"	075 E8-60	26.00 lbs



GALVANIZED 45° ELBOW

SIZE	PART NUMBER	WEIGHT
2"	080 E2-45	2.15 lbs
3"	080 E3-45	4.40 lbs
4"	080 E4-45	9.30 lbs
6"	080 E6-45	18.20 lbs
8"	080 E8-45	28.10 lbs



GALVANIZED 30° ELBOW

SIZE	PART NUMBER	WEIGHT
2"	085 E2-30	2.00 lbs
3"	085 E3-30	4.50 lbs
4"	085 E4-30	10.00 lbs
6"	085 E6-30	17.75 lbs
8"	085 E8-30	30.00 lbs



GALVANIZED A-STYLE 90° ELBOW

10"	086 E10-90	50.00 lbs
12"	086 E12-90	81.00 lbs

12" Galvanized Locking Bar sold separately.

GALVANIZED A-STYLE 45° ELBOW

10"	086 E10-45	44.00 lbs
12"	086 E12-45	71.75 lbs

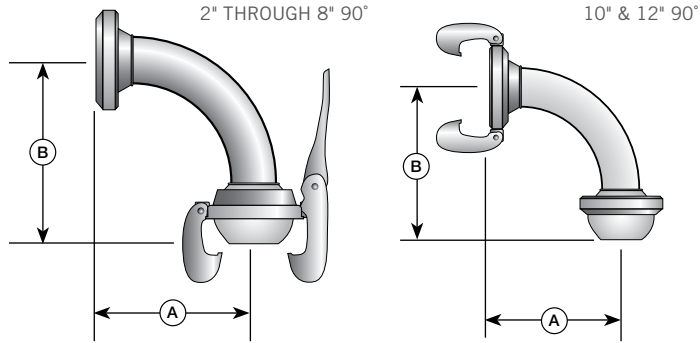
12" Galvanized Locking Bar sold separately.

45° A-STYLE ELBOW

PRICE AND DISCOUNT STRUCTURES SUBJECT TO CHANGE WITHOUT NOTICE.

VACUUM
30 inches hg

PRESSURE RATING
2 – 3" = 290 psi
4 – 8" = 175 psi
10 – 12" = 88 psi

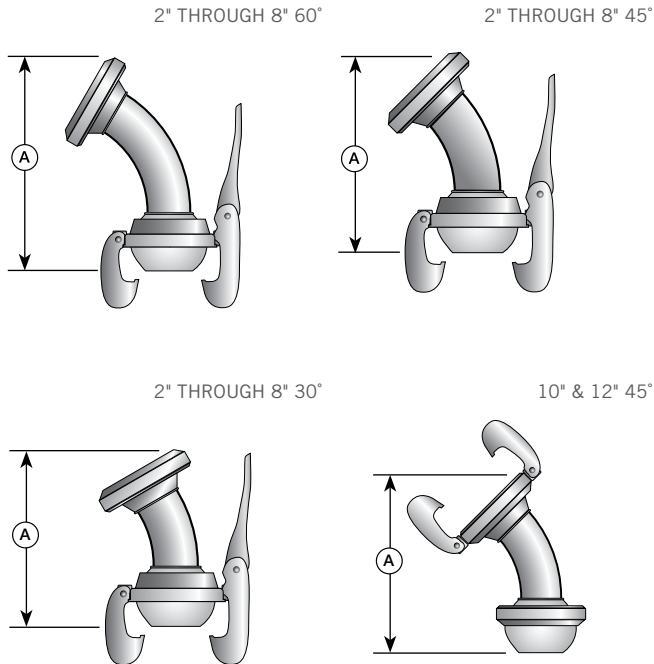


90° ELBOW SPECS

Specifications to 1/8" & subject to change

SIZE	A	B
2"	7.91	8.86
3"	9.33	10.75
4"	12.95	14.84
6"	18.58	20.59
8"	16.38	18.39
10"	17.72	20.12
12"	18.31	21.73

PRICE AND DISCOUNT STRUCTURES SUBJECT TO CHANGE WITHOUT NOTICE.



30°, 45° & 60° ELBOW SPECS

Specifications to 1/8" & subject to change

SIZE	A (30°)	A (45°)	A (60°)
2"	9.07	8.07	6.69
3"	11.02	9.84	8.27
4"	15.75	14.17	9.45
6"	20.47	17.72	14.37
8"	19.69	17.52	14.76
10"	22.64	20.47	17.72
12"	24.80	22.83	20.08

TECH TIP

When connecting ball and socket coupled hoses and fittings to a pump, position the locking jaws of the lever locking ring as close to 12 o'clock and 6 o'clock (in other words, top and bottom) as possible.

Wil-loc elbows allow smooth transitions through bends and turns on suction or discharge lines. Using Wil-loc elbows will reduce the wear of your hose and eliminate flow restrictions caused by kinking of lay-flat hose.

For easier coupling (especially of larger sizes) lubricate O-rings with Wil-lube (as seen in Specialty section). This will allow the ball to seat into the socket easier during first time usage.



B-STYLE COUPLING SHOWN

GALVANIZED INCREASER W/ LOCKING LEVER

SIZE	PART NUMBER	WEIGHT
2" x 3"	150 IN2-3M	3.70 lbs
2" x 4"	150 IN2-4M	7.90 lbs
3" x 4"	150 IN3-4M	7.50 lbs
3" x 6"	150 IN3-6M	14.75 lbs
3" x 8"	150 IN3-8M	23.40 lbs
4" x 6"	150 IN4-6M	15.25 lbs
4" x 8"	150 IN4-8M	24.55 lbs
6" x 8"	150 IN6-8M	25.45 lbs

GALVANIZED A-STYLE INCREASER

8" x 10"	151 IN8-10M	50.00 lbs
8" x 12"	151 IN8-12M	74.00 lbs
10" x 12"	151 IN10-12M	98.50 lbs

12" Galvanized Locking Bar sold separately.



B-STYLE COUPLING SHOWN

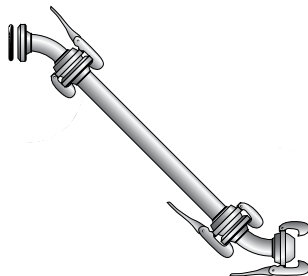
GALVANIZED REDUCER

3" x 2"	160 R3-2M	2.65 lbs
4" x 3"	160 R4-3M	5.70 lbs
6" x 2"	160 R6-2M	6.55 lbs
6" x 3"	160 R6-3M	9.65 lbs
6" x 4"	160 R6-4M	10.95 lbs
8" x 2"	160 R8-2M	9.30 lbs
8" x 3"	160 R8-3M	16.20 lbs
8" x 4"	160 R8-4M	18.15 lbs
8" x 6"	160 R8-6M	21.85 lbs

GALVANIZED A-STYLE REDUCER

10" x 8"	161 R10-8M	71.30 lbs
12" x 8"	161 R12-8M	102.50 lbs
12" x 10"	161 R12-10M	160.00 lbs

12" Galvanized Locking Bar sold separately.

**GALVANIZED MODULAR S-BEND**

4"	162 SBMA4	68.00 lbs
6"	162 SBMA6	81.00 lbs
8"	162 SBMA8	125.00 lbs

PRICE AND DISCOUNT STRUCTURES SUBJECT TO CHANGE WITHOUT NOTICE.

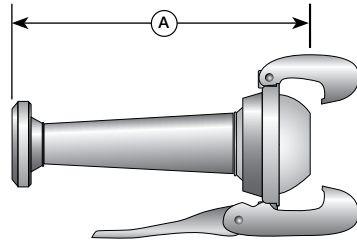
© 2008 WIL-LOC

WIL - 110508

VACUUM
30 inches hg

PRESSURE RATING

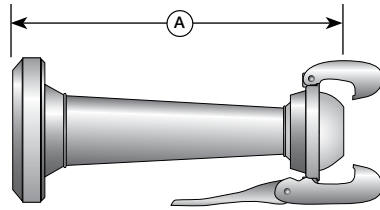
2 - 3" = 290 psi
4 - 8" = 175 psi
10 - 12" = 88 psi



INCREASER SPECS

Specifications to 1/8" & subject to change

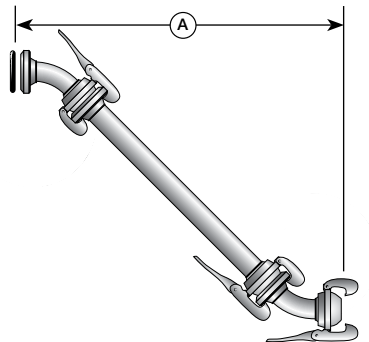
SIZE	A
2" x 3"	9.84
3" x 4"	11.42
4" x 6"	12.00
6" x 8"	16.34
8" x 10"	21.75
8" x 12"	23.50
10" x 12"	24.75



REDUCER SPECS

Specifications to 1/8" & subject to change

SIZE	A
3" x 2"	9.25
4" x 3"	11.23
6" x 2"	9.84
6" x 3"	11.02
6" x 4"	12.00
8" x 2"	13.00
8" x 3"	13.00
8" x 4"	17.32
8" x 6"	16.54
10" x 8"	22.50
12" x 8"	23.00
12" x 10"	24.00



S-BEND SPECS

Specifications to 1/8" & subject to change

SIZE	A
4"	61.00
6"	70.00
8"	72.00

PRICE AND DISCOUNT STRUCTURES SUBJECT TO CHANGE WITHOUT NOTICE.

WIL - 110508

© 2008 WIL-LOC

TECH TIP

Wil-loc reducers and increasers are manufactured with a cone-shaped pipe, which allows for less flow restriction and smoother transition from one size to another.

Wil-loc modular S-Bends provide a smooth transition from a pump's discharge outlet to ground level. Combination of two 45-degree elbows and short pipe allows for maximum flexibility to accommodate unique job sites and ground conditions.



GALVANIZED STND T's WITH MALE / BALL CONNECTION

SIZE	PART NUMBER	WEIGHT
2"	060 T2M	4.70 lbs
3"	060 T3M	9.00 lbs
4"	060 T4M	22.00 lbs
6"	060 T6M	34.25 lbs
8"	060 T8M	55.45 lbs
10"	061 T10M	N/A
12"	061 T12M*	135.00 lbs

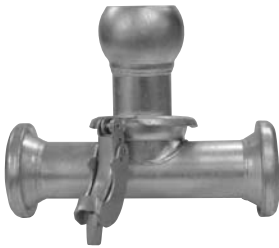
12" Galvanized Locking Bar sold separately.



GALVANIZED T's WITH FEMALE / SOCKET CONNECTION

SIZE	PART NUMBER	WEIGHT
2"	050 T2F	3.25 lbs
3"	050 T3F	6.60 lbs
4"	050 T4F	13.60 lbs
6"	050 T6F	24.30 lbs
8"	050 T8F	43.00 lbs
10"	054 T10F	N/A
12"	054 T12F*	125.00 lbs

12" Galvanized Locking Bar sold separately.



GALVANIZED INLINE T's WITH MALE / BALL CONNECTION

SIZE	PART NUMBER	WEIGHT
2"	051 LT2M	3.65 lbs
3"	051 LT3M	6.65 lbs
4"	051 LT4M	13.90 lbs
6"	051 LT6M	26.40 lbs
8"	051 LT8M	43.90 lbs
10"	052 LT10M	N/A
12"	052 LT12M*	125.00 lbs

12" Galvanized Locking Bar sold separately.



GALVANIZED DOUBLE FEMALE Y's – MALE / BALL

SIZE	PART NUMBER	WEIGHT
4"	064 YM4	19.15 lbs
6"	064 YM6	32.40 lbs
8"	064 YM8	43.45 lbs
10"	065 YM10	117.00 lbs
12"	065 YM12*	204.00 lbs

12" Galvanized Locking Bar sold separately.

GALVANIZED DOUBLE FEMALE Y's – INCREASING MALE / BALL

SIZE	PART NUMBER	WEIGHT
2 - 4" x 6"	066 YI4-6	43.00 lbs
2 - 6" x 8"	066 YI6-8	66.00 lbs
2 - 8" x 10"	067 YI8-10	79.00 lbs
2 - 8" x 12"	067 YI8-12*	114.00 lbs
2 - 10" x 12"	067 YI10-12*	165.00 lbs

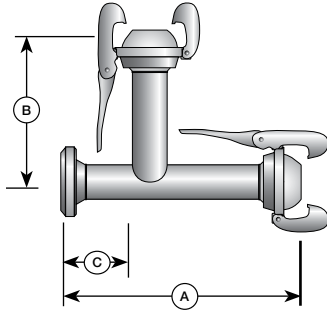
12" Galvanized Locking Bar sold separately.

PRICE AND DISCOUNT STRUCTURES SUBJECT TO CHANGE WITHOUT NOTICE.

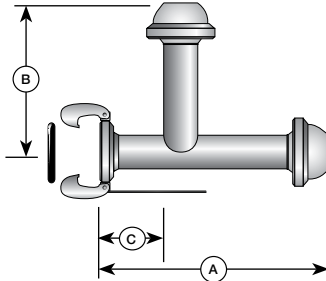
WIL - 110508 © 2008 WIL-LOC

VACUUM
30 inches hg

PRESSURE RATING
2 - 3" = 290 psi
4 - 8" = 175 psi
10 - 12" = 88 psi



2" THROUGH 8" STANDARD T



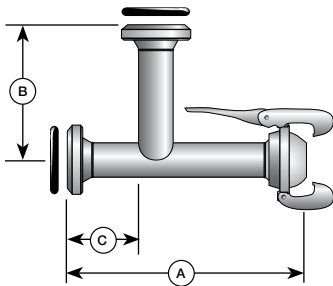
10" & 12" STANDARD T

STANDARD MALE T SPECS

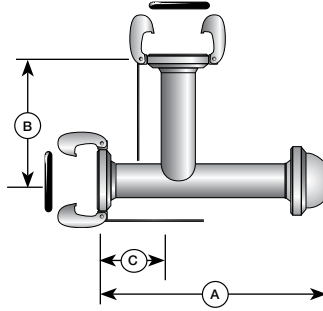
Specs to 1/8" & subject to change.

SIZE	A	B	C
2"	14.02	7.09	2.36
3"	16.14	9.25	2.76
4"	20.32	11.42	2.76
6"	22.63	12.00	3.15
8"	27.68	13.00	3.94
10"	33.50	17.75	6.00
12"	37.50	20.50	6.00

PRICE AND DISCOUNT STRUCTURES SUBJECT TO CHANGE WITHOUT NOTICE.



2" THROUGH 8" FEMALE T

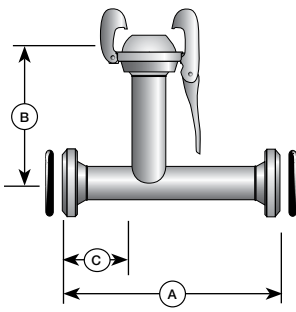


10" & 12" FEMALE T

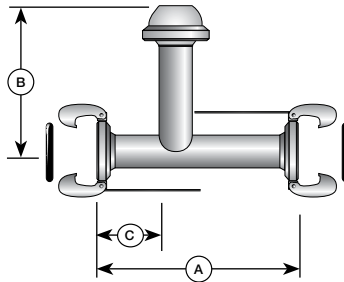
T SOCKET SPECS

Specs to 1/8" & subject to change.

SIZE	A	B	C
2"	14.02	4.13	2.36
3"	16.14	4.53	2.76
4"	30.32	5.71	2.76
6"	22.63	7.09	3.15
8"	27.68	9.25	3.94
10"	33.25	15.50	6.00
12"	37.50	17.25	6.00



2" THROUGH 8" INLINE T



10" & 12" INLINE T

T MALE SPECS

Specs to 1/8" & subject to change.

SIZE	A	B	C
2"	13.03	7.09	2.36
3"	14.33	9.25	2.76
4"	13.78	11.42	2.76
6"	20.63	12.00	3.15
8"	25.67	13.00	3.94
10"	30.75	18.00	6.00
12"	34.25	20.50	6.00

WIL-L - 110508

© 2008 WIL-L-LOC

TECH TIP

When setting up a sewer by-pass pumping application, T or Y connections can be used to tie in a back-up pump's suction and discharge lines to the primary system.

Using two Wil-loc flange check valve assemblies and one Y allows both the primary and the back-up pump in a by-pass application to be quickly and easily connected to a single discharge line.



GALVANIZED END PLUG BALL / MALE

SIZE	PART NUMBER	WEIGHT
2"	090 EP2	1.05 lbs
3"	090 EP3	2.35 lbs
4"	090 EP4	4.45 lbs
6"	090 EP6	8.80 lbs
8"	090 EP8	10.75 lbs



GALVANIZED A-STYLE END PLUG BALL / MALE

SIZE	PART NUMBER	WEIGHT
10"	091 EP10	22.20 lbs
12"	091 EP12	36.15 lbs



GALVANIZED END CAP SOCKET / FEMALE

SIZE	PART NUMBER	WEIGHT
2"	100 EC2	0.40 lbs
3"	100 EC3	0.75 lbs
4"	100 EC4	1.95 lbs
6"	100 EC6	3.90 lbs
8"	100 EC8	7.30 lbs



GALVANIZED A-STYLE END CAP SOCKET / FEMALE

SIZE	PART NUMBER	WEIGHT
10"	101 EC10	17.90 lbs
12"	101 EC12*	35.40 lbs

12" Galvanized Locking Bar sold separately.



B-STYLE DOUBLE BALL SHOWN

GALVANIZED DOUBLE BALL / MALE

SIZE	PART NUMBER	WEIGHT
2"	110 DB2	3.50 lbs
3"	110 DB3	6.80 lbs
4"	110 DB4	13.60 lbs
6"	110 DB6	28.80 lbs
8"	110 DB8	41.60 lbs
10"	111 DB10	54.00 lbs
12"	111 DB12	96.00 lbs



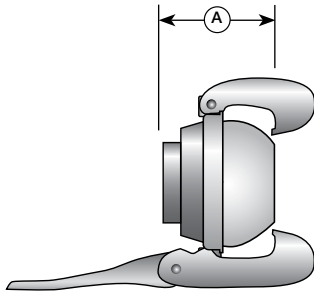
B-STYLE DOUBLE SOCKET SHOWN

GALVANIZED DOUBLE SOCKET / FEMALE

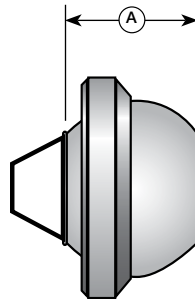
SIZE	PART NUMBER	WEIGHT
2"	120 DS2	0.90 lbs
3"	120 DS3	1.75 lbs
4"	120 DS4	4.95 lbs
6"	120 DS6	7.80 lbs
8"	120 DS8	15.00 lbs
10"	121 DS10	42.00 lbs
12"	121 DS12*	87.00 lbs

PRICE AND DISCOUNT STRUCTURES SUBJECT TO CHANGE WITHOUT NOTICE.

WIL - 110508 © 2008 WIL-LOC



2" THROUGH 8" END PLUG

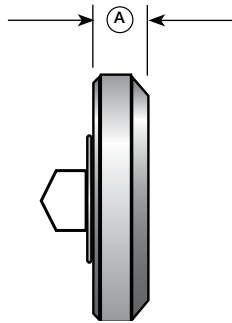


10" & 12" END PLUG

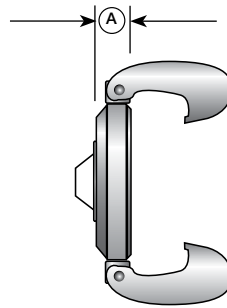
END PLUG BALL / MALE SPECS

Specs to 1/8" & subject to change.

SIZE	A
2"	2.17
3"	2.87
4"	3.88
6"	4.25
8"	5.00
10"	6.73
12"	8.35



2" THROUGH 8" END CAP

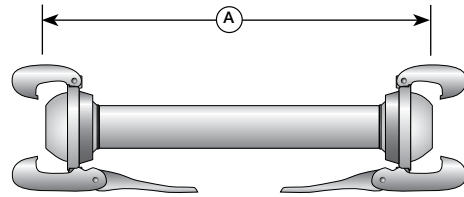


10" & 12" END CAP

END CAP SOCKET / FEMALE

Specs to 1/8" & subject to change.

SIZE	A
2"	3.27
3"	4.57
4"	6.50
6"	8.31
8"	10.51
10"	9.72
12"	12.20

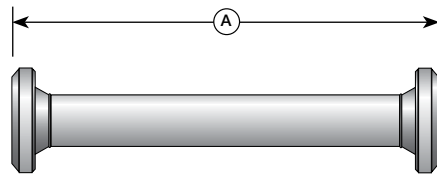


DOUBLE BALL / MALE

DOUBLE BALL / MALE

Specs to 1/8" & subject to change.

SIZE	A
2"	10.04
3"	11.42
4"	16.73
6"	15.75
8"	18.11



DOUBLE SOCKET / FEMALE

DOUBLE SOCKET / FEMALE

Specs to 1/8" & subject to change.

SIZE	A
2"	4.72
3"	4.92
4"	6.50
6"	7.09
8"	10.24

TECH TIP

End caps and plugs may be used for several purposes, such as closing off the end of a pipeline, capping unused branches on T's and Y's, vacuum/pressure testing of pumps or pipe, or capping pump fittings during transport.

For easier coupling (especially of larger sizes) lubricate new Wil-loc O-rings. This will allow the ball to seat into the socket easier during first time usage.

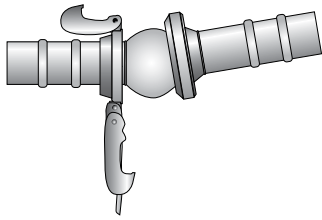
PRICE AND DISCOUNT STRUCTURES SUBJECT TO CHANGE WITHOUT NOTICE.

WILL - 110508

© 2008 WILL-LOC

B-STYLE ASSEMBLY INSTRUCTIONS

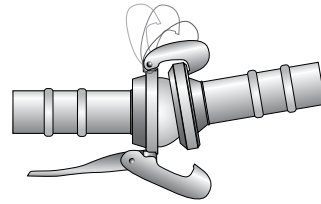
1



STEP ONE

Insert the ball into the socket so that the ball seats loosely against the O-ring inside the socket.

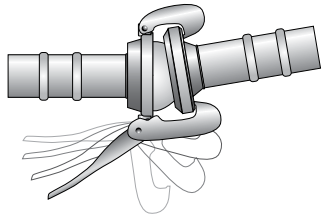
2



STEP TWO

Reach around the socket with the "short" locking jaw and seat its' gripping edge securely into the grooved lip on the back side of the socket.

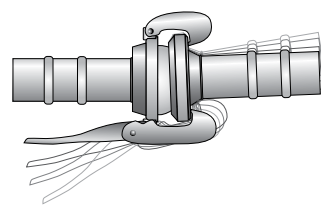
3



STEP THREE

While keeping tension on the "short" locking jaw so that it remains in place, open the lever arm attached to the "long" locking jaw so that it extends to reach behind the socket and seat securely into the groove lip.

4

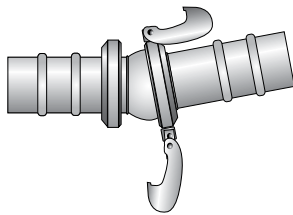


STEP FOUR

Finally, ensure that the leading edge of the ball is aligned just enough so that it does not cut into the O-ring surface, then close the lever arm (or pull towards the barbed hose shank) and lock the ball into the socket.

A-STYLE ASSEMBLY INSTRUCTIONS

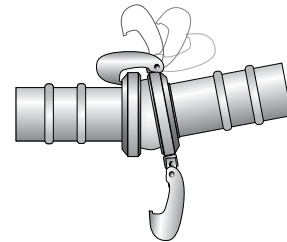
1



STEP ONE

Insert the ball into the socket so that the ball seats loosely against the O-ring inside the socket.

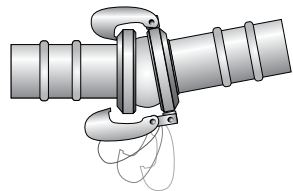
2



STEP TWO

Reach around the locking ring with the "short" locking jaw and seat its' gripping edge securely into the grooved lip on the back side of the locking ring.

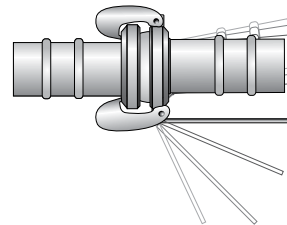
3



STEP THREE

While keeping tension on the "short" locking jaw so that it remains in place, extend the "long" locking jaw forward to reach behind the locking ring and seat the gripping edge securely into the grooved lip.

4



STEP FOUR*

Finally, ensure that the leading edge of the ball is aligned enough so that it does not cut into the O-ring surface, then (with 12" fittings) insert the leverage bar into the hole provided on the base of the "long" jaw and pull back toward the barbed shank to lock the ball into the socket.

*NOTE: 10" A-Style Wil-loc female/socket fittings have lever locking handles permanently attached to the "long" jaw mechanism. Locking action is similar to the B-Style lever arm.

For additional information about the assembly or use of Wil-loc® Quick Coupling products, contact customer service at 1.800.801.0123