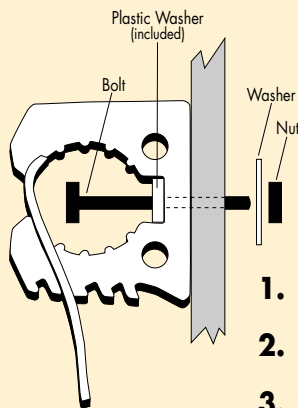


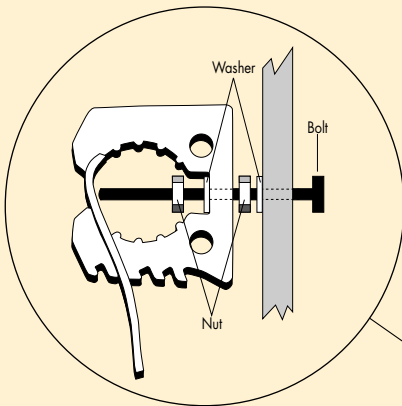
Quick Fist®

One Piece Rubber Clamp

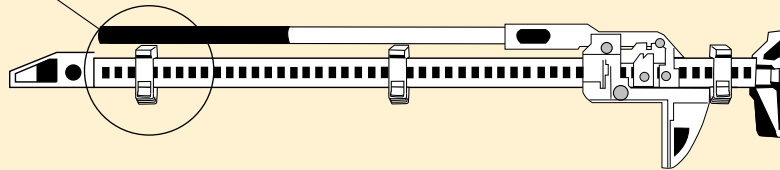


Installation:

1. Use #10 bolt or screw to fasten. Do not over tighten.
2. QUICK FIST can be mounted with the strap facing in any direction.
3. To Clamp: Put the tool or implement into the jaws. With both of your thumbs on the strap, push strap to reach the desired tightness. Repeat.
4. For certain applications, like roof racks with round tubing, you can install the QUICK FIST clamps using hose clamps. Make sure you center the hose clamp on the plastic washer to avoid cutting into the rubber clamp.
5. QUICK FIST can also be used as a pipe stand-off (particularly suited for marine applications). Do not use on exhaust pipes.



For High Lift Jacks:



1. For best results, use three QUICK FIST clamps evenly spaced along the steel bar of the jack.
2. Drill out hole in QUICK FIST clamp with a 7/16" (12mm) bit. Use a 2 1/2" (65mm) long, 3/8" (10mm) bolt to attach the clamp (see illustration).
3. To mount the jack, hold it parallel to the three clamps. Put one end of the jack into a QUICK FIST clamp, with the bolt through the steel bar and then lock the clamp loosely. Next place the steel bar into the other two clamps and lock. After all three clamps are holding the jack, tighten as necessary.

End of the Road, inc.

1209 Beddington Pk.
Nashville, TN 37215, US
615.828.2600 fax 615.661.6413
www.endroad.com